



13

Lisianski Island Sept 2, 1967  
Looking towards the SW Casuarina  
tree from camp.  
Photo by D.I.Hoff

*Neg # 378*

LISIANSKI ISLAND

SEPT 1967

DIHOFF PHOTO



15

Hawaiian Monk Seals resting along beach near Fish and Wildlife sign on the northeastern portion of the island. Common and Hawaiian Noddies were considerably more

abundant in the taller Scaevola south of the sign than in the lower Scaevola fringe shown in the foreground.

Neg# 379

LISIANSKI ISLAND

SEPT 1967

DIHOFF PHOTO



12

Lisianski Island Sept 2, 1967  
Looking inland towards the palms  
from crest of SE beach. Imm.  
Blue-faced Booby in foreground  
Photo by D.I. Hoff Neg # 380

LISIANSKI ISLAND  
SEPT 1967  
D I HOFF PHOTO



11

beach

NEG. # 381

LISIANSKI ISLAND

SEPT 1967

DIHOFF PHOTO





9

Lisianski Island Sept. 2, 1967  
Brown Noddies roosting on North  
Beach

Photo D.I. Hoff

NEG. # 382

LISIANSKI ISLAND

SEPT 1967

D I HOFF PHOTO



16  
Lisianski Island Sept 3, 1967  
Looking towards the palm trees  
from the crest of the  
beach

neg. # 383 Photo D.I. Hoff

LISIANSKI ISLAND

SEPT 1967

D I HOFF PHOTO



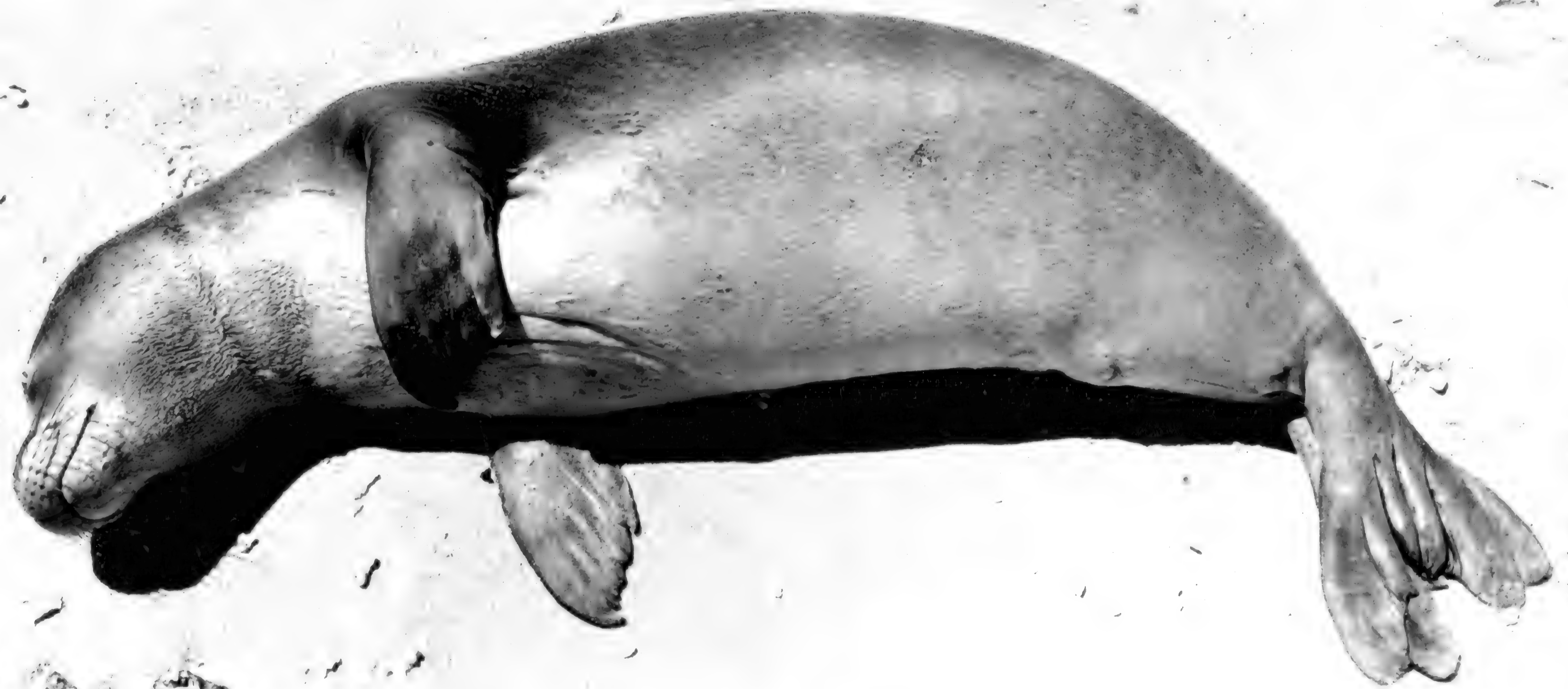
14

Lisianski Island Sept. 3, 1967  
Blue-faced Booby flushing from  
club on broad, sandy south point  
of the island.  
Photo D.I.Hoff NEG # 384

LISIANSKI ISLAND

SEPT 1967

D I HOFF PHOTO



65

10  
Lisianski Island Sept. 2, 1967  
Yearling Hawaiian Monk Seal  
Photo D.I.Hoff

LISIANSKI ISLAND

SEPT 1967

D I HOFF PHOTO

*negative 385*





0553

541 - 4 September 1967 Lisianski, from small FWS sign near  
south end of island. Inland from #1 (# 543) looking  
"west." C.A. Ely



0553

Print  
Revised

543 - 4 September 1967 Lisianski, from small FWS sign near  
south end of island. Looking toward SW point. C.A. Ely  
(I believe from highest point on island).



0553

549 - 4 September 1967 Lisianski, from small FWS sign near  
south end of island. Inland from #2 (#541) looking  
"WNW". C.A. Ely



0553

Print  
Reverset

551 - 4 September 1967 Laysan, from small FWS sign near  
south end of island. Looking North toward coconut trees.  
C.A. Ely





Print  
reversed

557 - 4 September 1967 Lisianski, Casuarina on west shore.



Print  
Reversed

567 - 4 September 1967 - Lisianski, view inside rim just west  
of SE point. C.A. Ely



Neg. # 581

Lisianski Island, Sept 1-4, 1967  
Young Great Frigatebirds in isolated  
Scaevola in center of island.  
Photo R.B.Clapp



Neg. # 582  
Lisianski Island, Sept. 1-4, 1967  
Club of Blue-faced Boobies on  
south point.  
Photo R.B.Clapp





Neg. # **583**

Lisianski Island, Sept 1-4, 1967

Bonin Petrel resting on sand near  
burrow. Photo R.B.Clapp



Neg. # 585

Lisianski Island, Sept 1-4, 1967  
Pair of Wedge-tailed Shearwaters  
near burrow near camp on east  
side. Photo R.B.Clapp



Neg. # 586

Lisianski Island Sept 1-4, 1967

Immature Blue-faced Booby flying  
overhead.

Photo R.B.Clapp



Neg. # 595

Lisianski Island, Sept 1-4, 1967

Rocky ledge of east beach.

Photo R.B.Clapp





Neg. # 624

Lisianski Island, Sept 1-4, 1967

Christmas Shearwater chick at nest

site under Scaevola on the north-

east beach. Photo R.B.Clapp

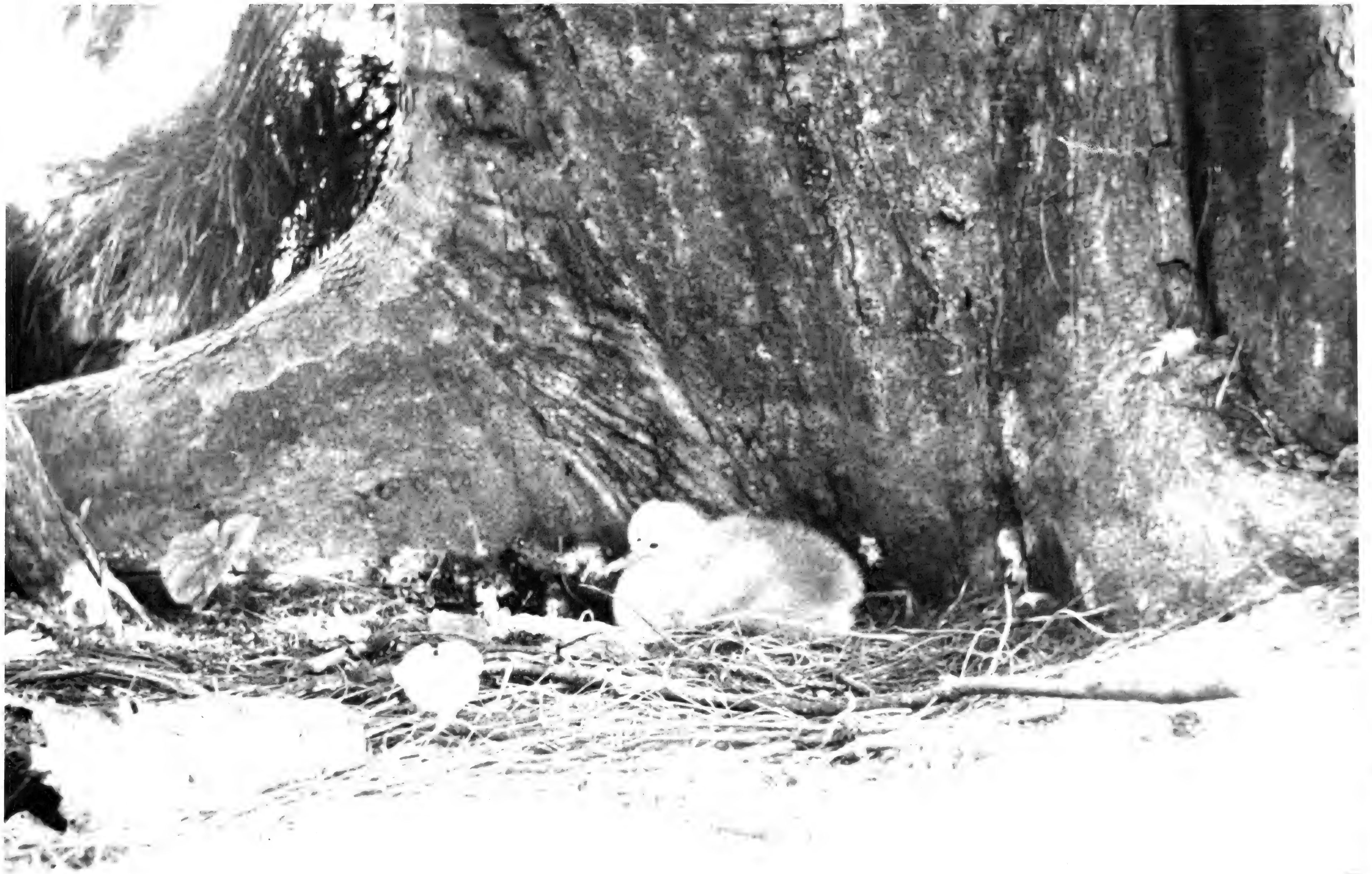


Neg. # 625

Lisianski Island, Sept 1-4, 1967  
Immature Blue-faced Boobies roost-  
ing on large log off east beach.  
Photo R.B.Clapp



Neg. # 628  
Lisianski Island, Sept. 14, 1967  
Looking along southeast beach  
towards south point.  
Photo R.B.Clapp



Neg. # 629

Lisianski Island, Sept 1-4, 1967

Wedge-tailed Shearwater chick at  
base of south-central Casuarina

Photo R.B. Clapp





Neg. # 630 Photo R.B.Clapp  
Lisianski Island, Sept 1-4, 1967  
Looking northwest from the south-  
ernmost point of the central ridge  
on the south end of the island.



Neg. # 728 Lisianski Island  
Hawaiian noddy tern-nesting  
(nearly fledged) Nest contained  
several small Portuguese man-o-war  
which were washed up on beach in

windrows.

Photo C.D.Hackman

Spring 1967

Haw. Noddy Tern - nesting (nearly fledged) Lisianski Island  
Spring 1967. Nest contained several small Portuguese man-o-war  
which were washed up on the beach in windrows.

CDH